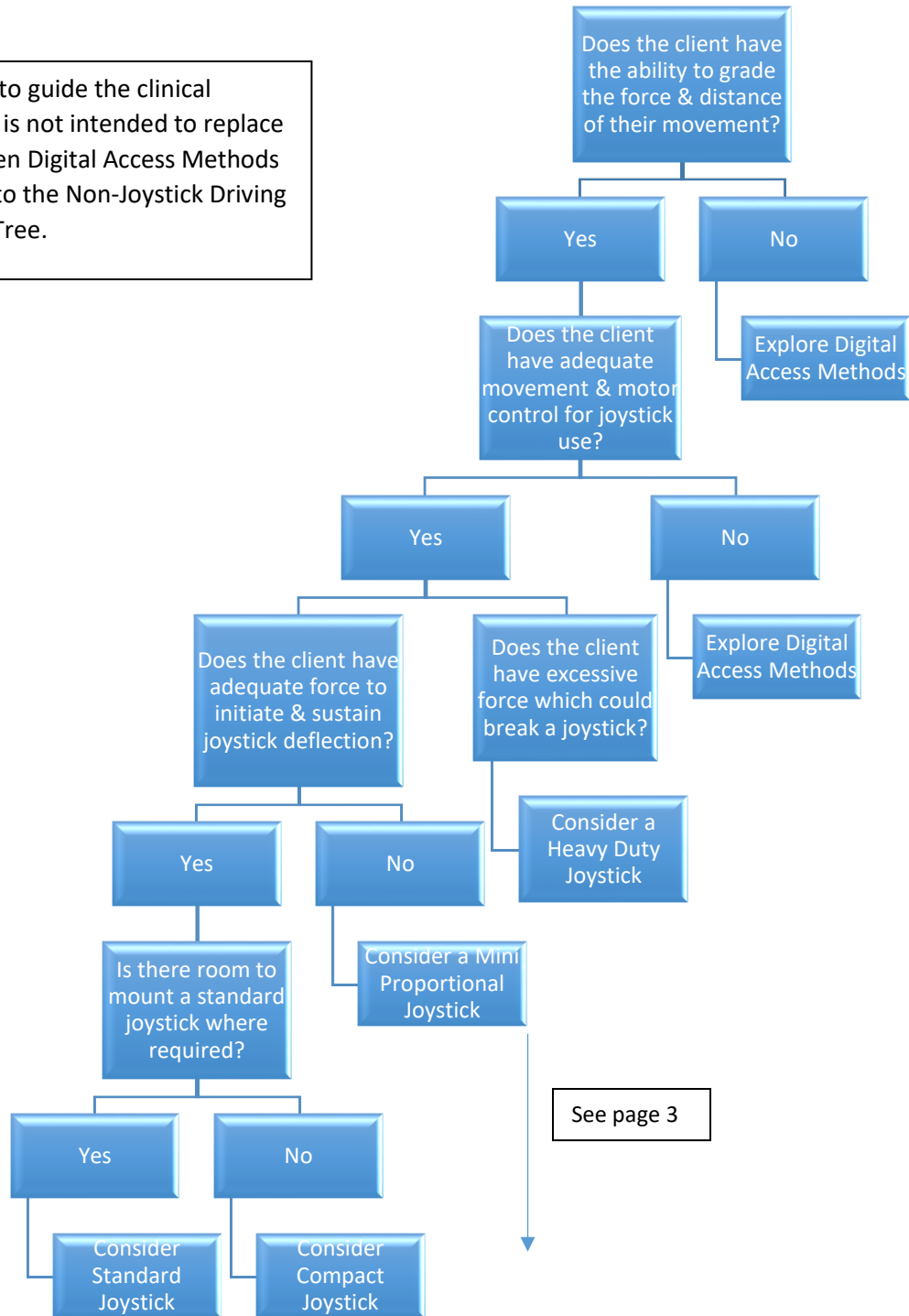


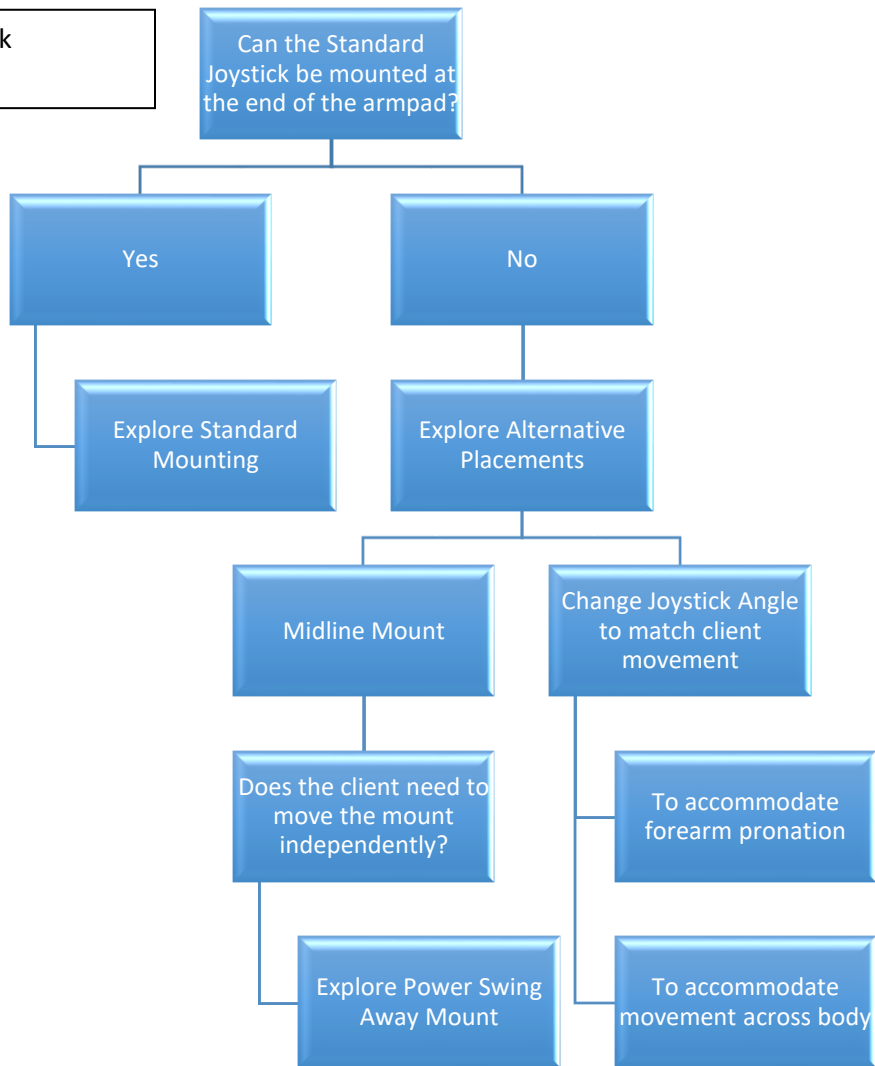
Power Wheelchair Joystick Decision Making Tree

This decision tree is meant to guide the clinical decision-making process. It is not intended to replace competent evaluation. When Digital Access Methods are indicated, please refer to the Non-Joystick Driving Methods Decision Making Tree.



Power Wheelchair Joystick Decision Making Tree

Standard Joystick considerations



Does the client have difficulty using a joystick by the hand during cold conditions?

Explore a hand warmer

Does the client have difficulty using a standard joystick handle?

Explore alternative handles

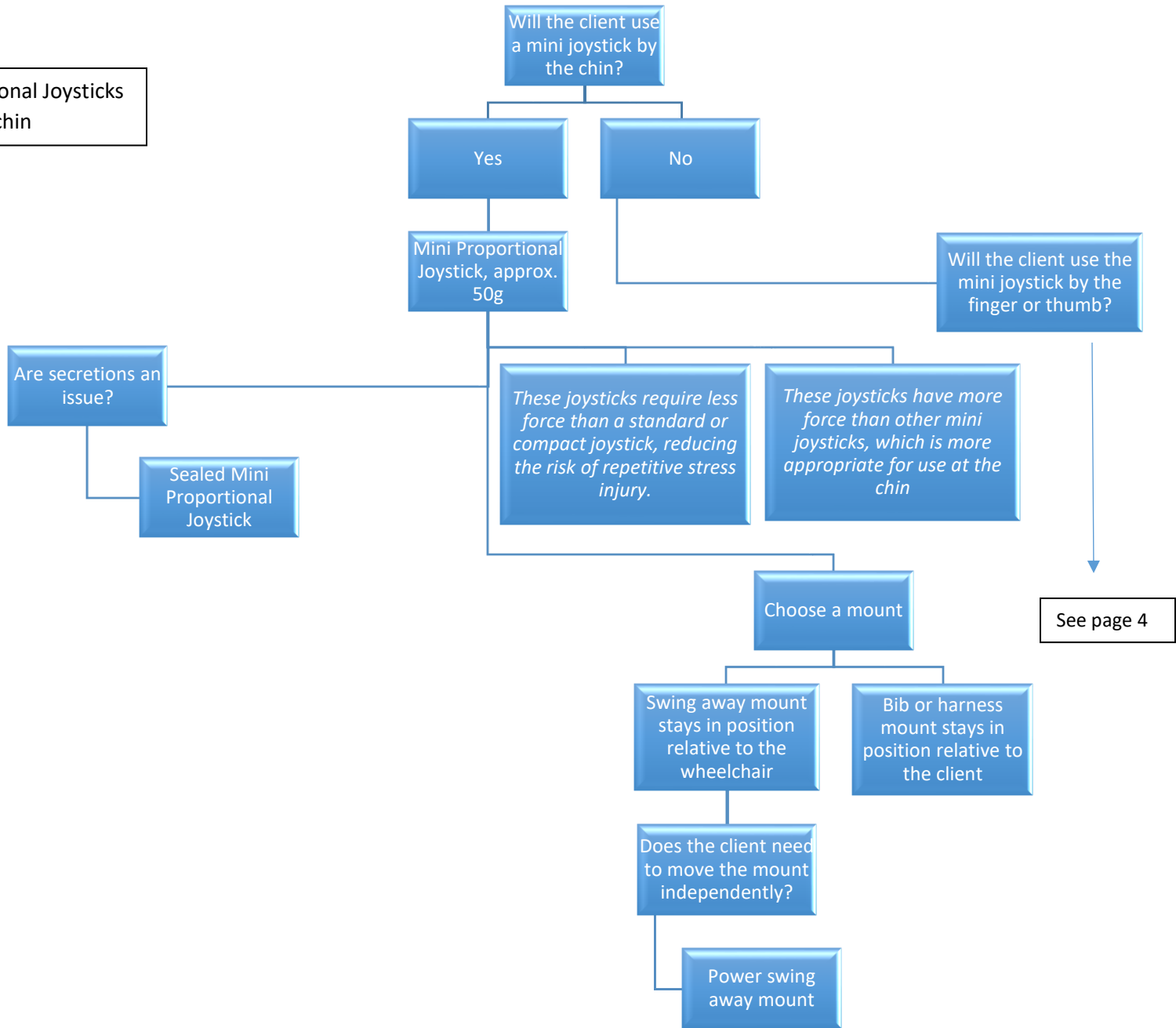
Does the client have poor grasp?

Explore Goal Post or Dome shaped handle

Explore Mushroom Joystick

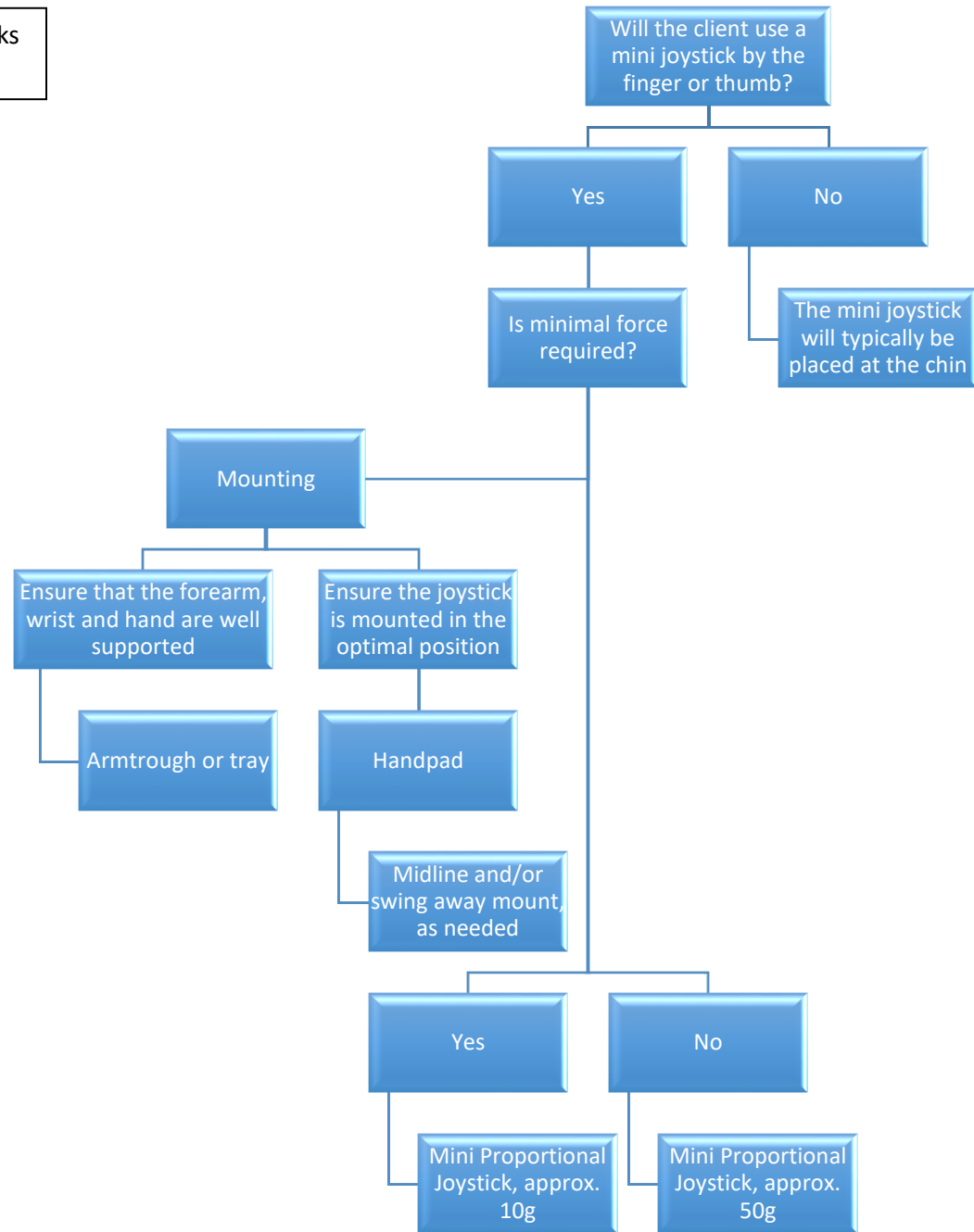
Power Wheelchair Joystick Decision Making Tree

Mini Proportional Joysticks Mounted by chin

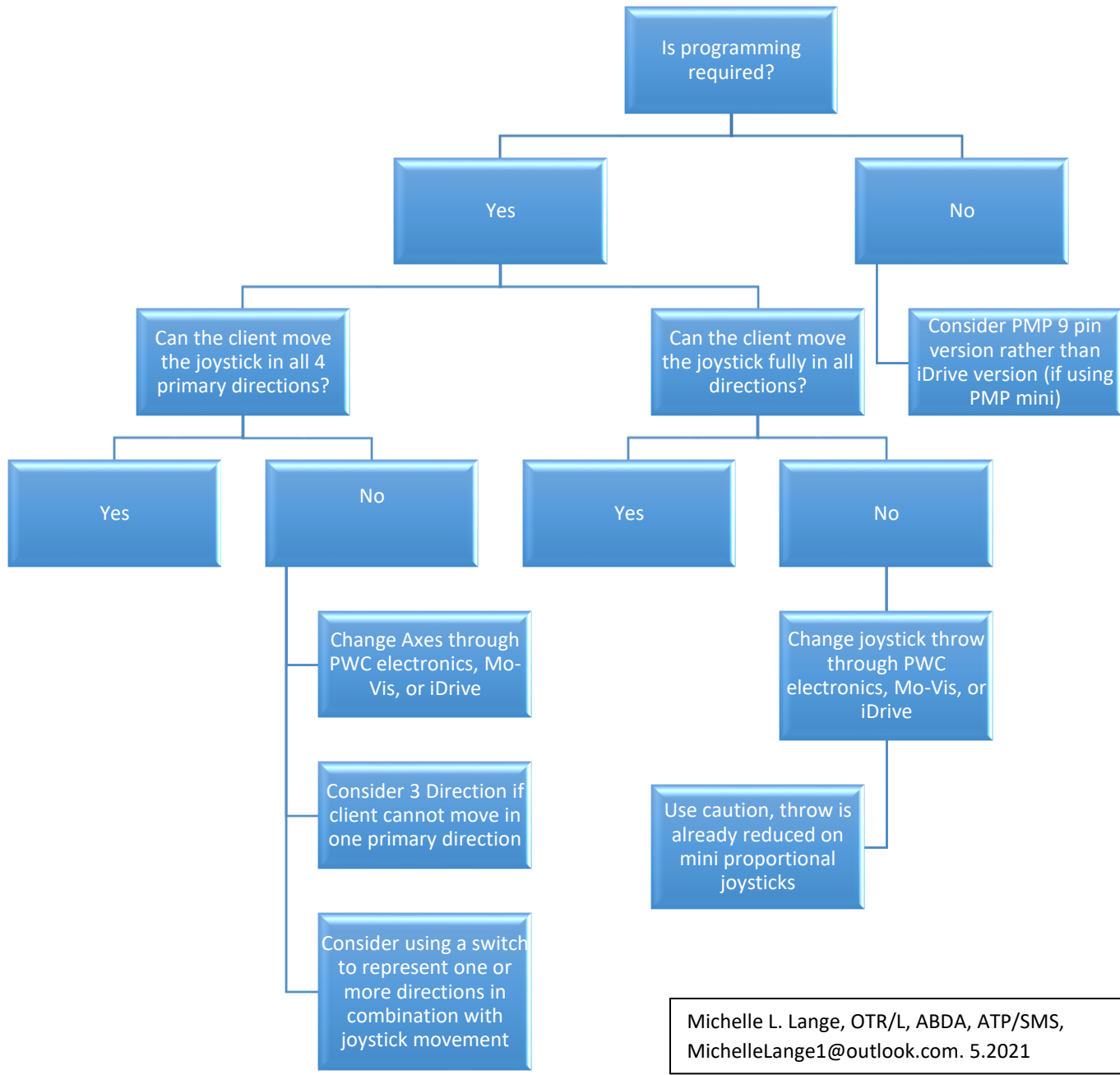


Power Wheelchair Joystick Decision Making Tree

Mini Proportional Joysticks
Mounted by hand



Power Wheelchair Joystick Decision Making Tree



Michelle L. Lange, OTR/L, ABDA, ATP/SMS,
MichelleLange1@outlook.com. 5.2021